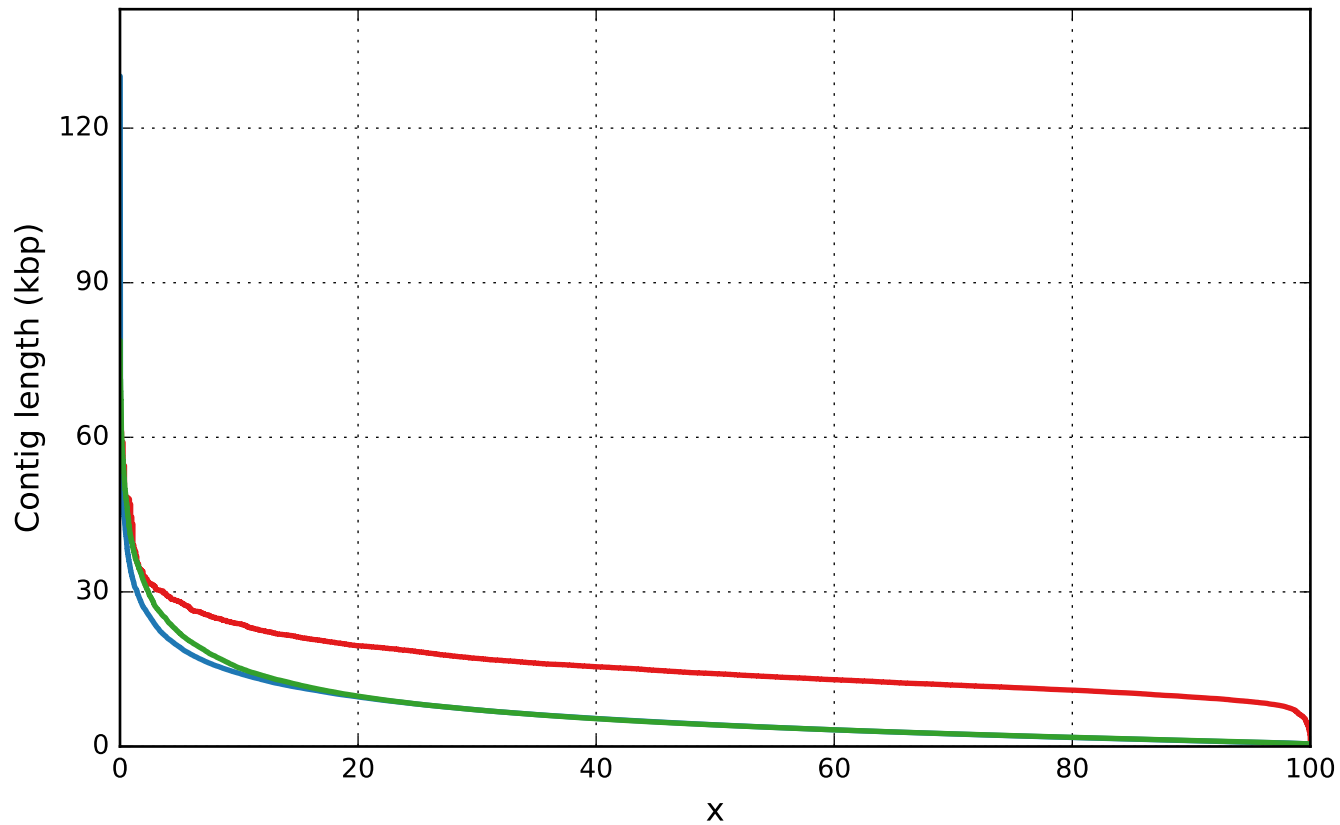


Report

	ol-canu-170623	ol-bgisoap-161129	ol-redundans-170608
# contigs (>= 0 bp)	3388	765755	300593
# contigs (>= 1000 bp)	3388	184804	137301
# contigs (>= 5000 bp)	3338	33792	24009
# contigs (>= 10000 bp)	2671	8733	6254
# contigs (>= 25000 bp)	121	553	586
# contigs (>= 50000 bp)	3	21	36
Total length (>= 0 bp)	46364927	776306190	546928670
Total length (>= 1000 bp)	46364927	642346712	476206320
Total length (>= 5000 bp)	46187705	302087694	220366692
Total length (>= 10000 bp)	40439853	131223850	99646272
Total length (>= 25000 bp)	3707809	17851807	19574809
Total length (>= 50000 bp)	174759	1283294	2106424
# contigs	3388	259186	188612
Largest contig	61211	130073	78788
Total length	46364927	697528655	513841258
GC (%)	36.53	35.83	35.90
N50	14126	4204	4175
N75	11429	2078	2103
L50	1230	43989	32022
L75	2145	103370	75613
# N's per 100 kbp	0.00	19149.50	1019.31

All statistics are based on contigs of size ≥ 500 bp, unless otherwise noted (e.g., "# contigs (≥ 0 bp)" and "Total length (≥ 0 bp)" include all contigs).

Nx

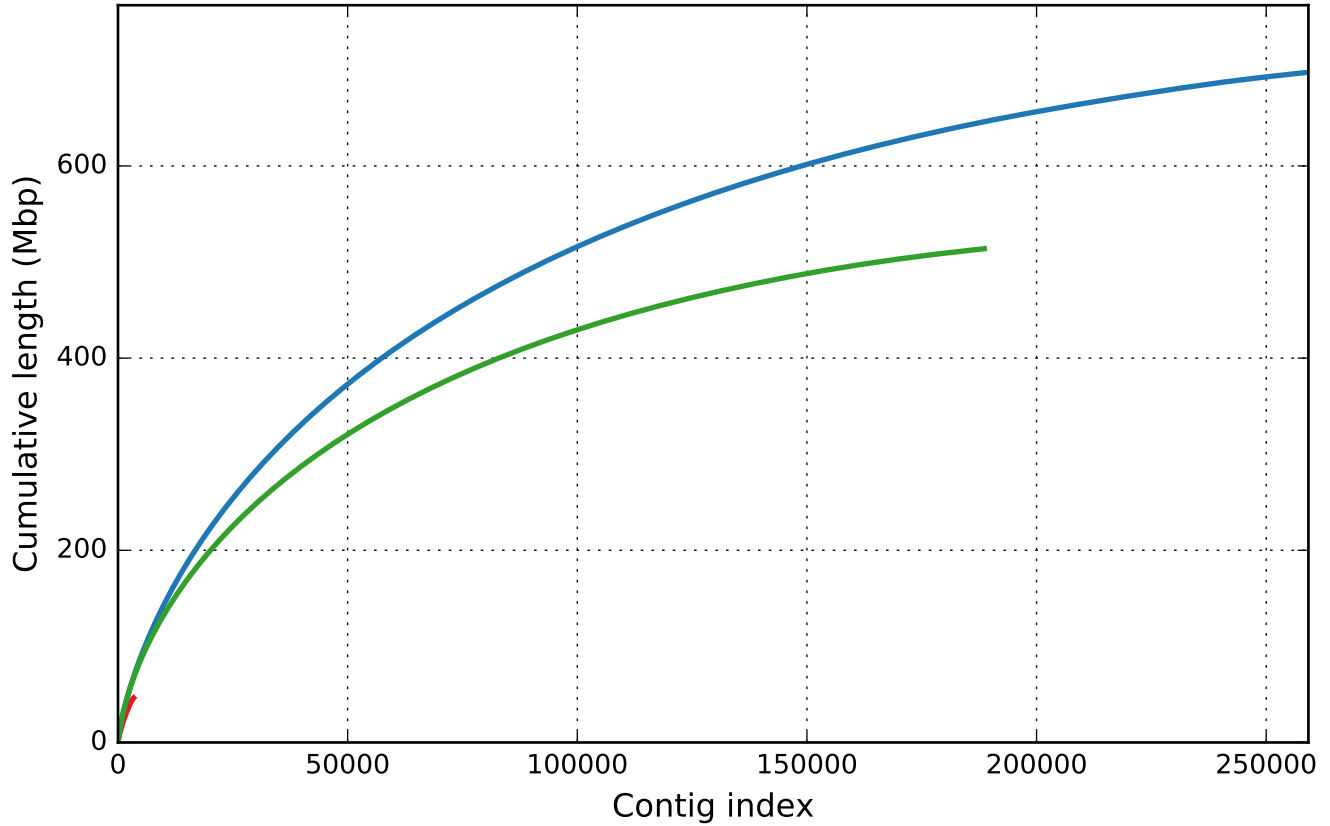


ol-canu-170623

ol-bgisoap-161129

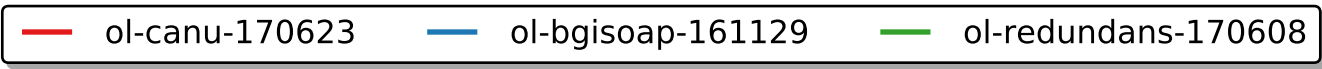
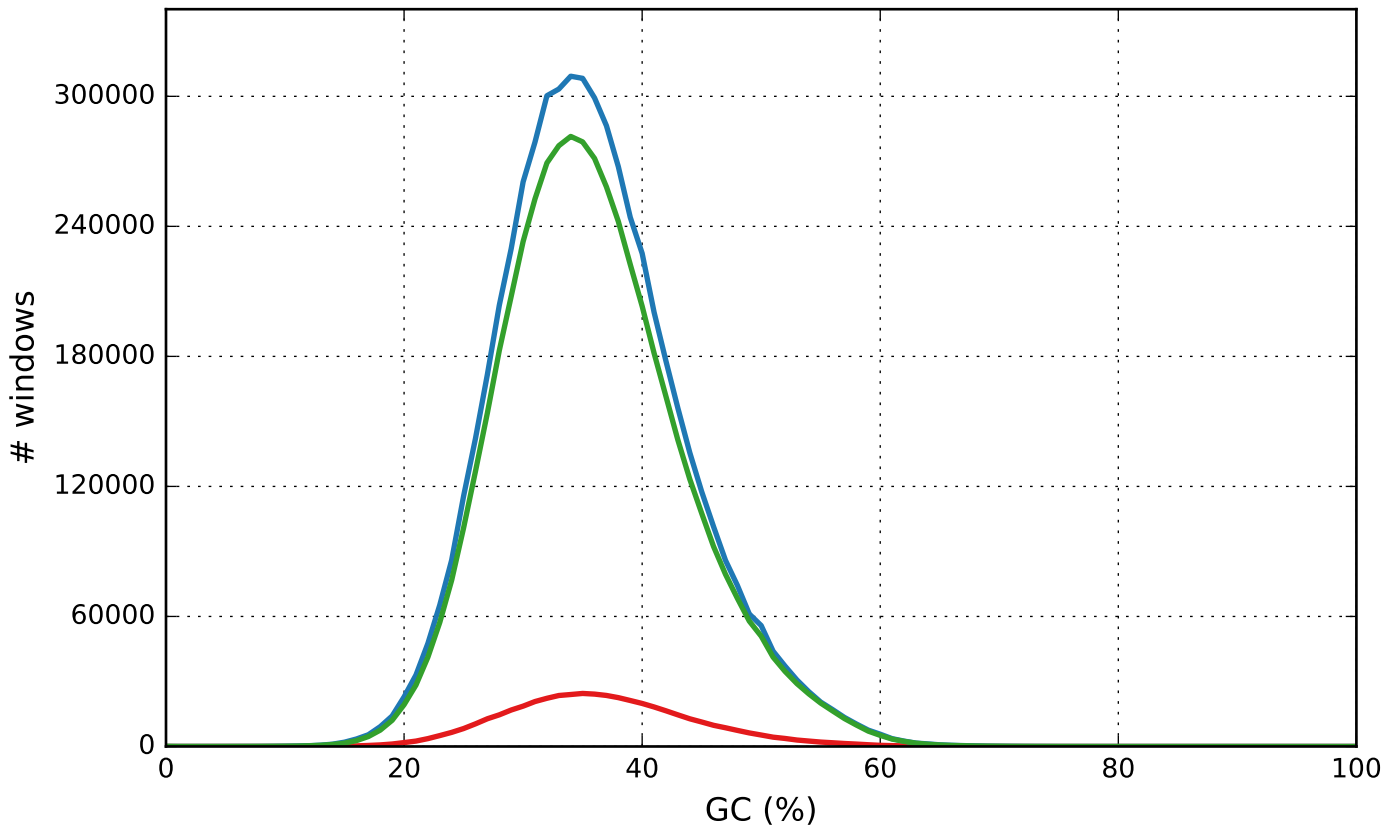
ol-redundans-170608

Cumulative length

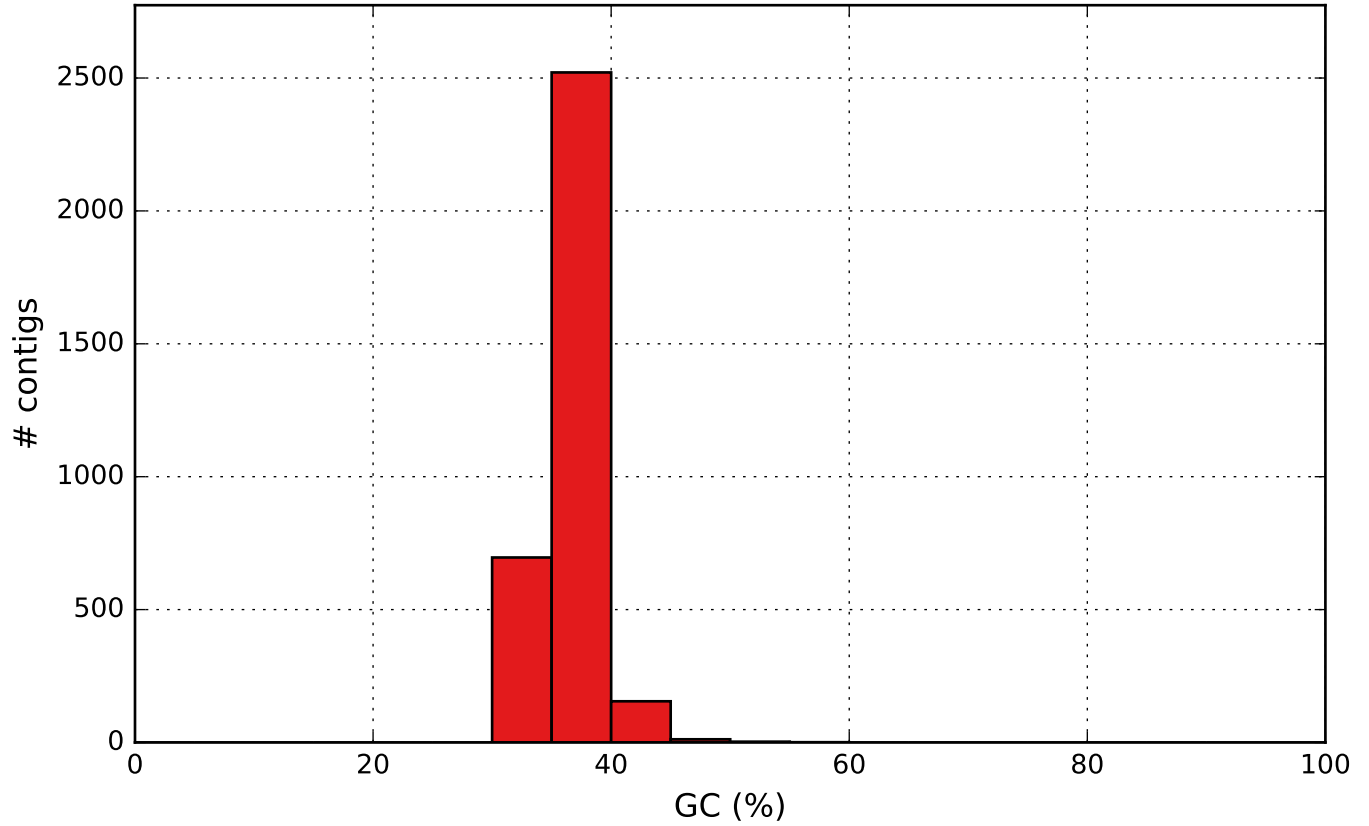


ol-canu-170623 ol-bgisoap-161129 ol-redundans-170608

GC content

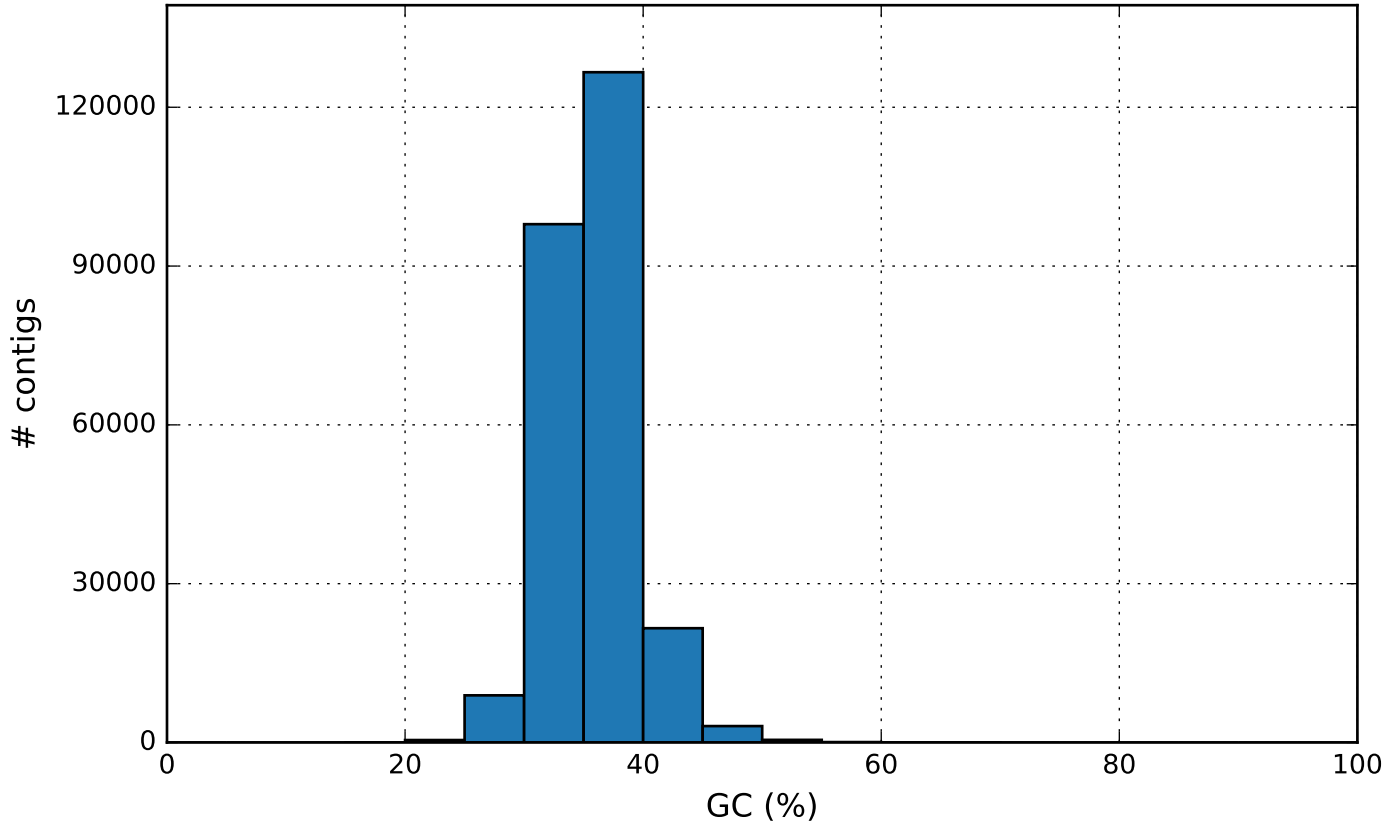


ol-canu-170623 GC content



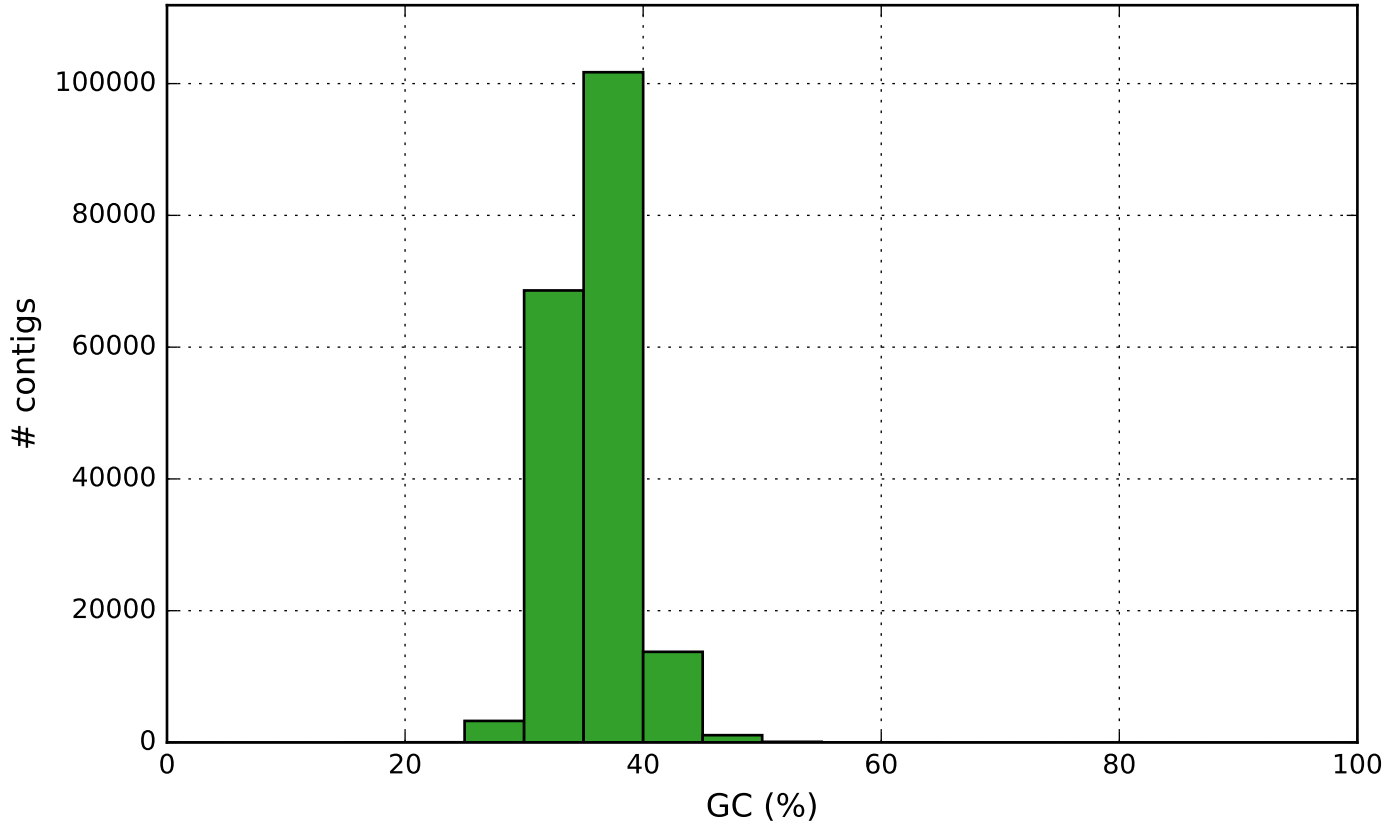
ol-canu-170623

ol-bgisoap-161129 GC content



ol-bgisoap-161129

ol-redundans-170608 GC content



ol-redundans-170608