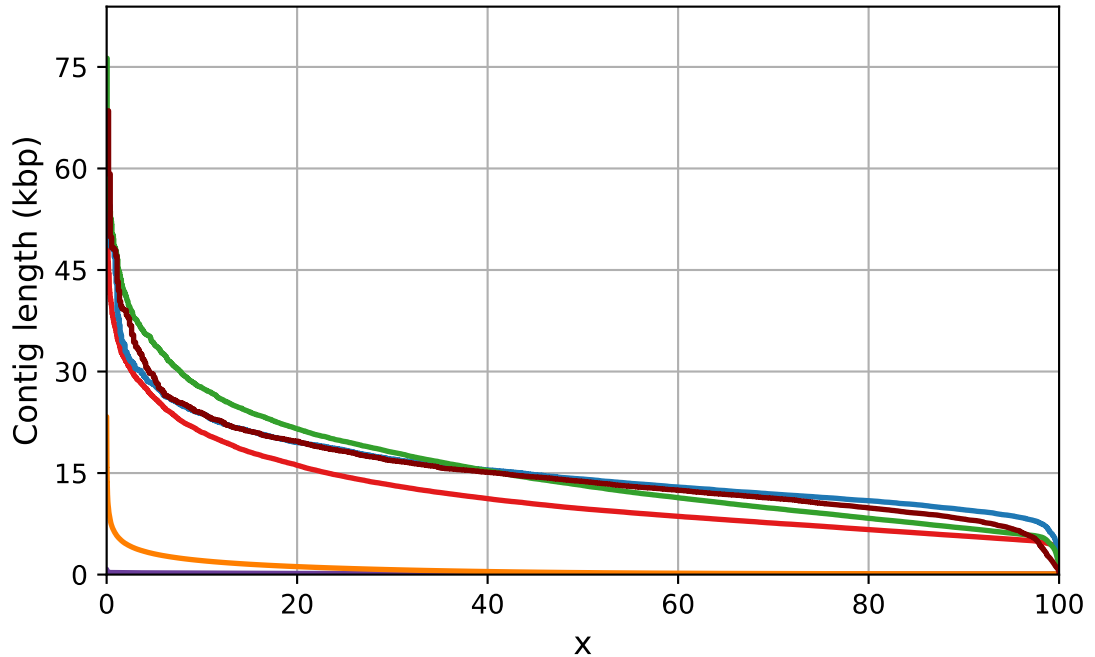


Report

	Olurida_v090	canu_sb_01	canu_sjw_01	platanus_sb_01	platanus_sb_02	racon_sjw_01
# contigs (>= 0 bp)	19009	3388	11246	193390	12395459	2896
# contigs (>= 1000 bp)	19009	3388	11246	0	141851	2776
# contigs (>= 5000 bp)	17955	3338	10751	0	2631	2492
# contigs (>= 10000 bp)	5653	2662	5469	0	157	1715
# contigs (>= 25000 bp)	343	119	547	0	0	88
# contigs (>= 50000 bp)	4	3	17	0	0	2
Total length (>= 0 bp)	177359031	46288879	132146852	16949361	1633553496	33496662
Total length (>= 1000 bp)	177359031	46288879	132146852	0	257934533	33421961
Total length (>= 5000 bp)	172575953	46112108	130500089	0	17549692	32715909
Total length (>= 10000 bp)	84976128	40284040	90550146	0	1977623	26428099
Total length (>= 25000 bp)	10402122	3651638	17592727	0	0	2808408
Total length (>= 50000 bp)	232116	174603	940167	0	0	127712
# contigs	19009	3388	11246	60765	4638852	2896
Largest contig	65918	61184	76280	764	23341	68522
Total length	177359031	46288879	132146852	8249461	1108644927	33496662
GC (%)	36.06	36.45	36.40	35.24	36.17	36.43
N50	9729	14117	13157	132	288	13763
N75	7149	11415	9066	114	137	10543
L50	6029	1230	3329	24682	740214	896
L75	11363	2145	6369	41402	2229973	1588
# N's per 100 kbp	0.00	0.00	0.00	0.00	0.00	0.00

All statistics are based on contigs of size >= 100 bp, unless otherwise noted (e.g., "# contigs (>= 0 bp)" and "Total length (>= 0 bp)" include all contigs).

Nx



Olurida_v090

canu_sjw_01

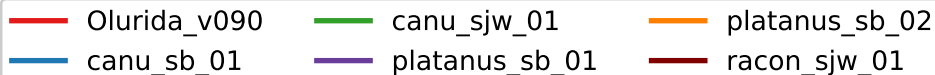
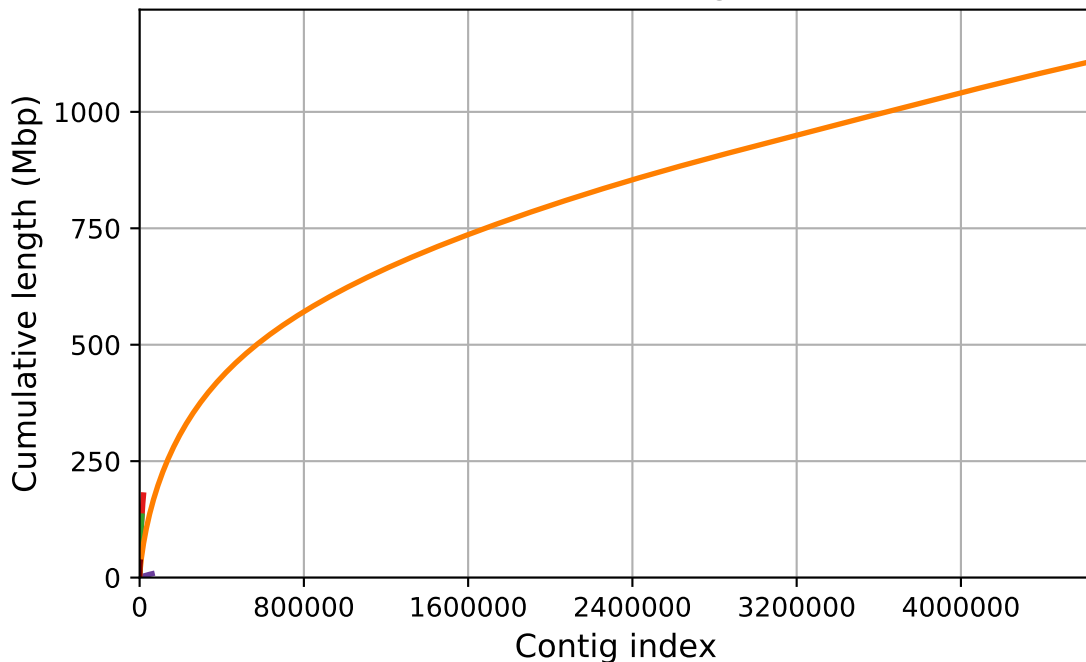
platanus_sb_02

canu_sb_01

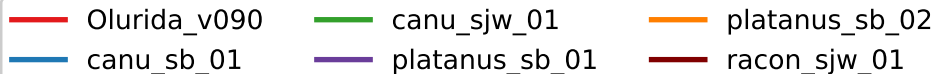
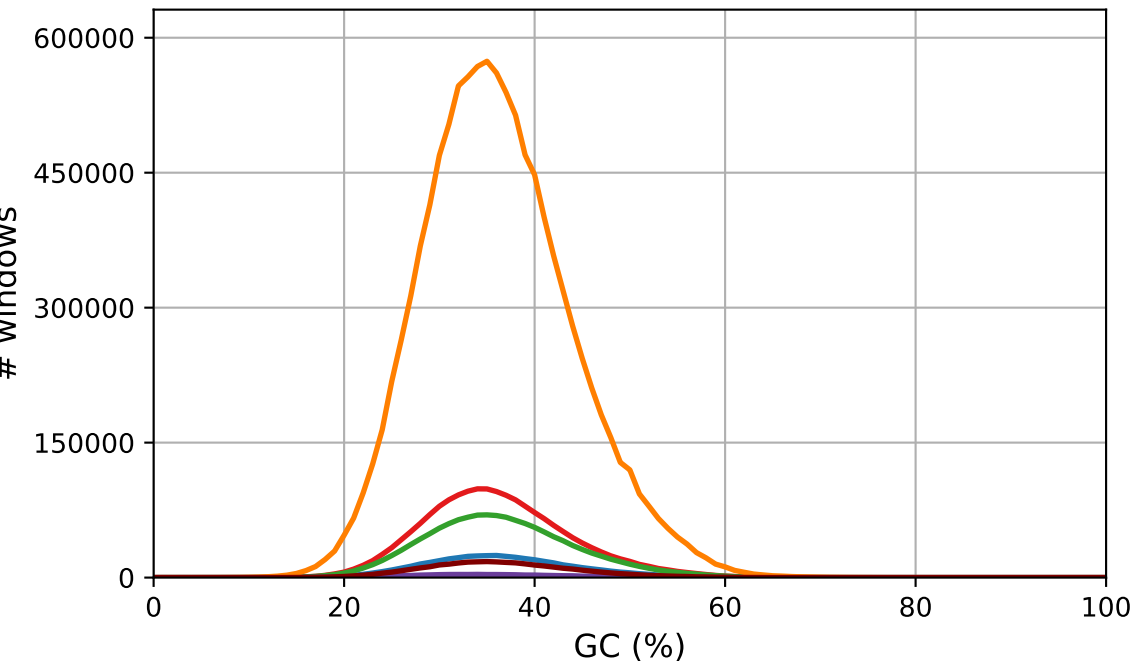
platanus_sb_01

racon_sjw_01

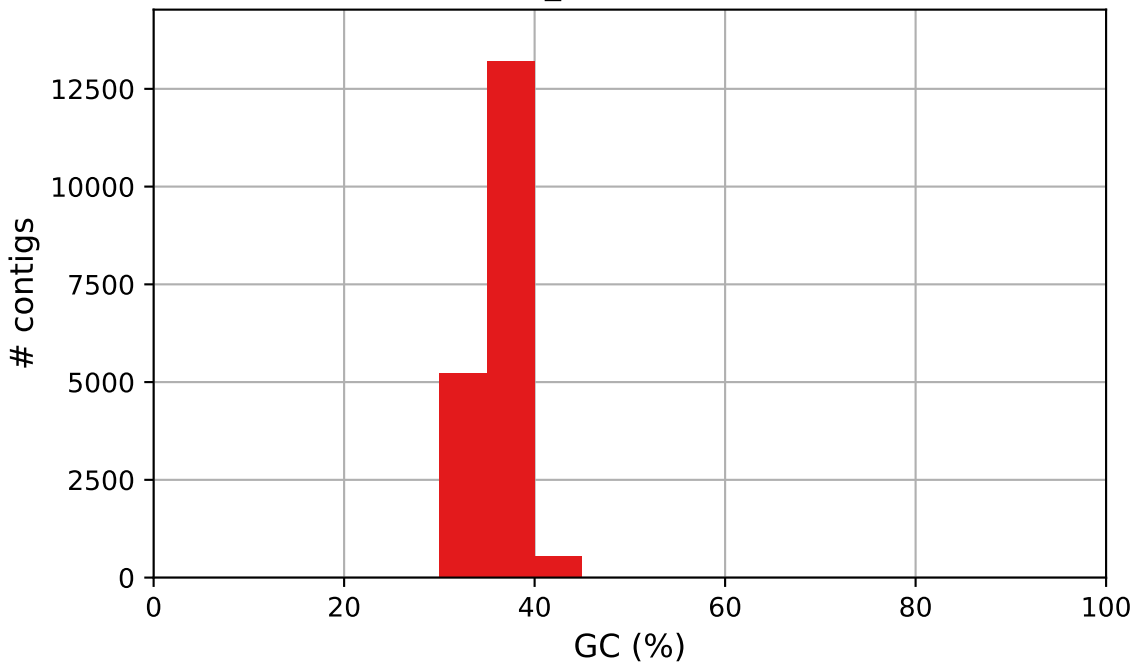
Cumulative length



GC content

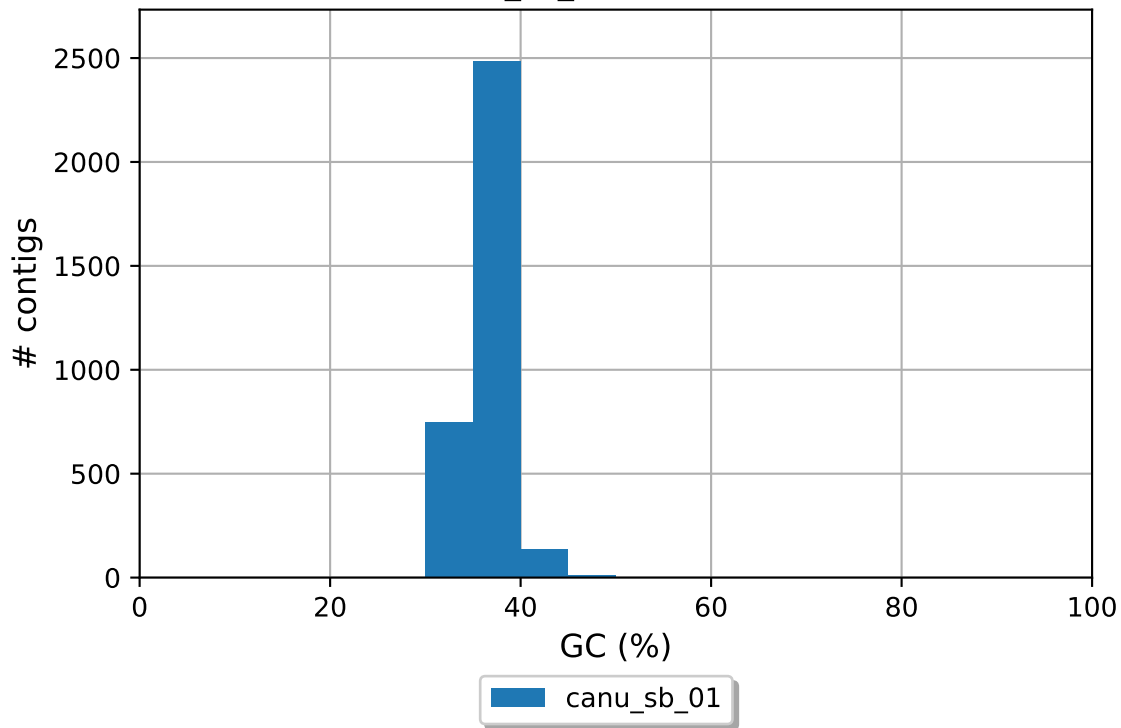


Olurida_v090 GC content

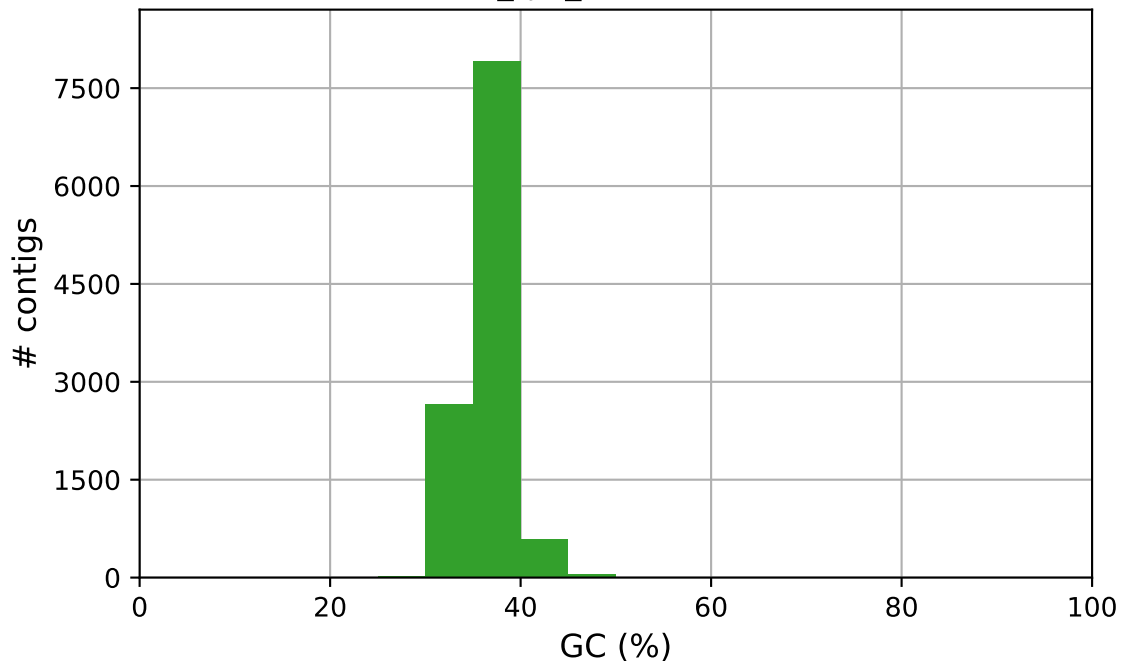


Olurida_v090

canu_sb_01 GC content

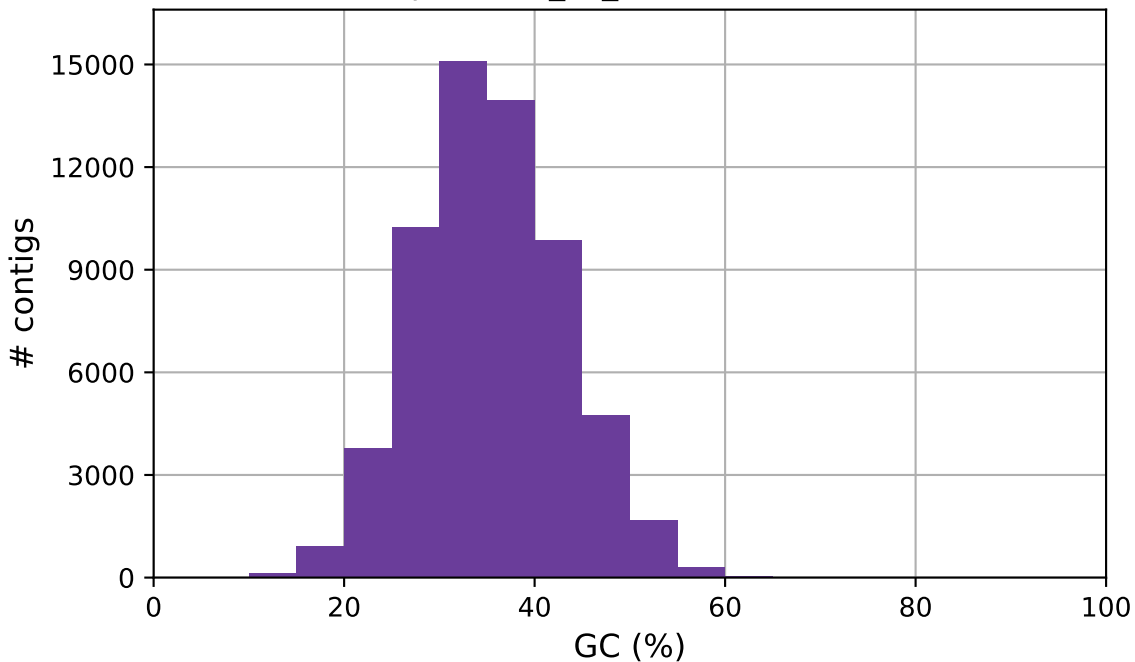


canu_sjw_01 GC content



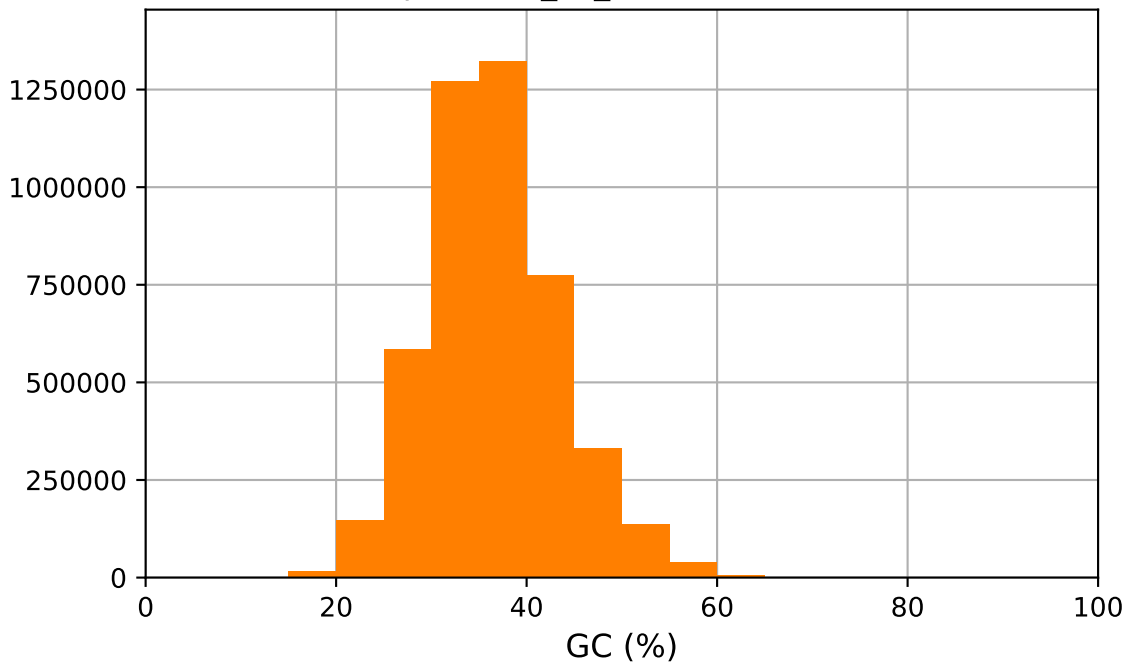
canu_sjw_01

platanus_sb_01 GC content



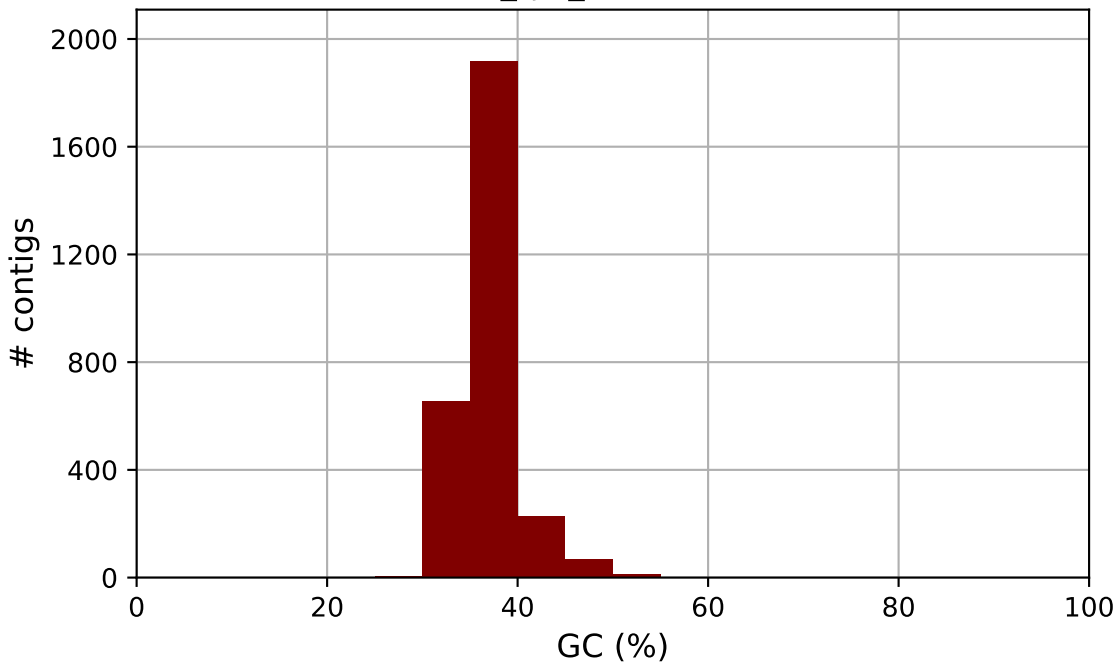
platanus_sb_01

platanus_sb_02 GC content



platanus_sb_02

racon_sjw_01 GC content



racon_sjw_01