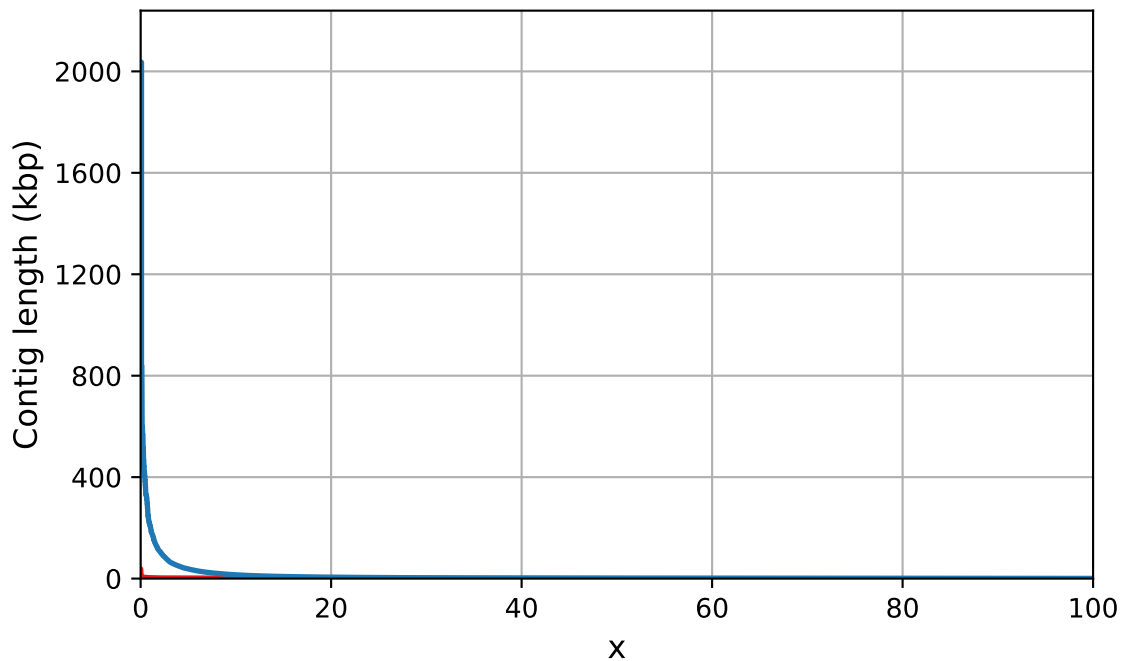


# Report

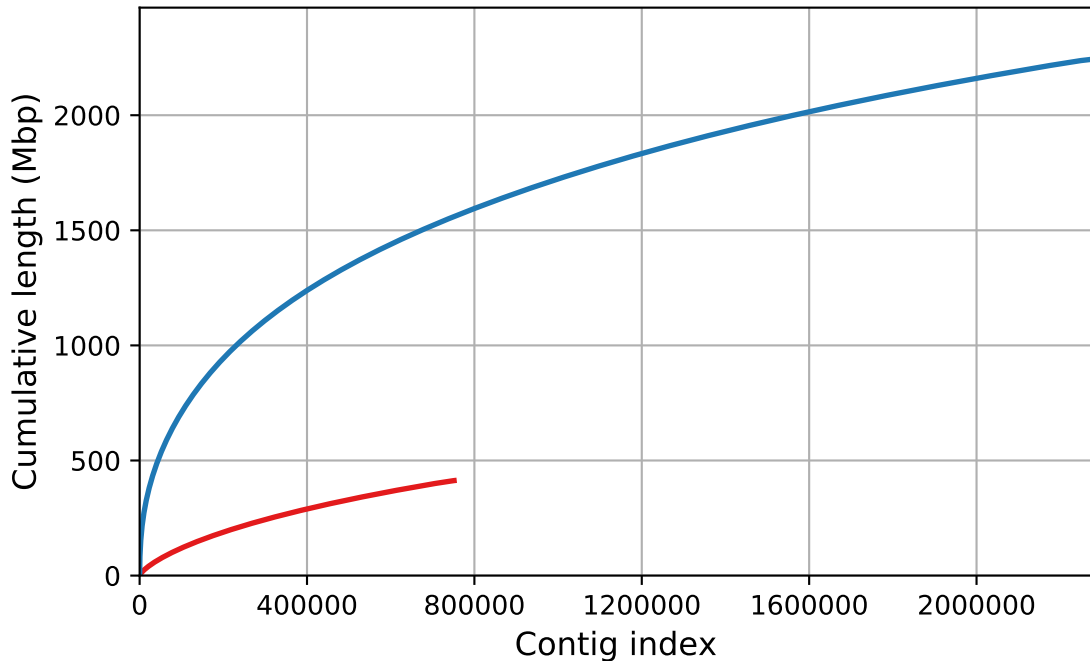
	ets	sjw
# contigs (>= 0 bp)	751440	2276153
# contigs (>= 1000 bp)	56371	496414
# contigs (>= 5000 bp)	239	41075
# contigs (>= 10000 bp)	23	12255
# contigs (>= 25000 bp)	1	2797
# contigs (>= 50000 bp)	0	864
Total length (>= 0 bp)	412748178	2243059881
Total length (>= 1000 bp)	80586861	1342986697
Total length (>= 5000 bp)	1673098	487449312
Total length (>= 10000 bp)	314927	293688660
Total length (>= 25000 bp)	37986	154694058
Total length (>= 50000 bp)	0	89125138
# contigs	751440	2276153
Largest contig	37986	2035937
Total length	412748178	2243059881
GC (%)	44.29	39.32
N50	566	1413
N75	403	624
L50	230075	308641
L75	448193	932685
# N's per 100 kbp	0.00	0.00

All statistics are based on contigs of size >= 100 bp, unless otherwise noted (e.g., "# contigs (>= 0 bp)" and "Total length (>= 0 bp)" include all contigs).

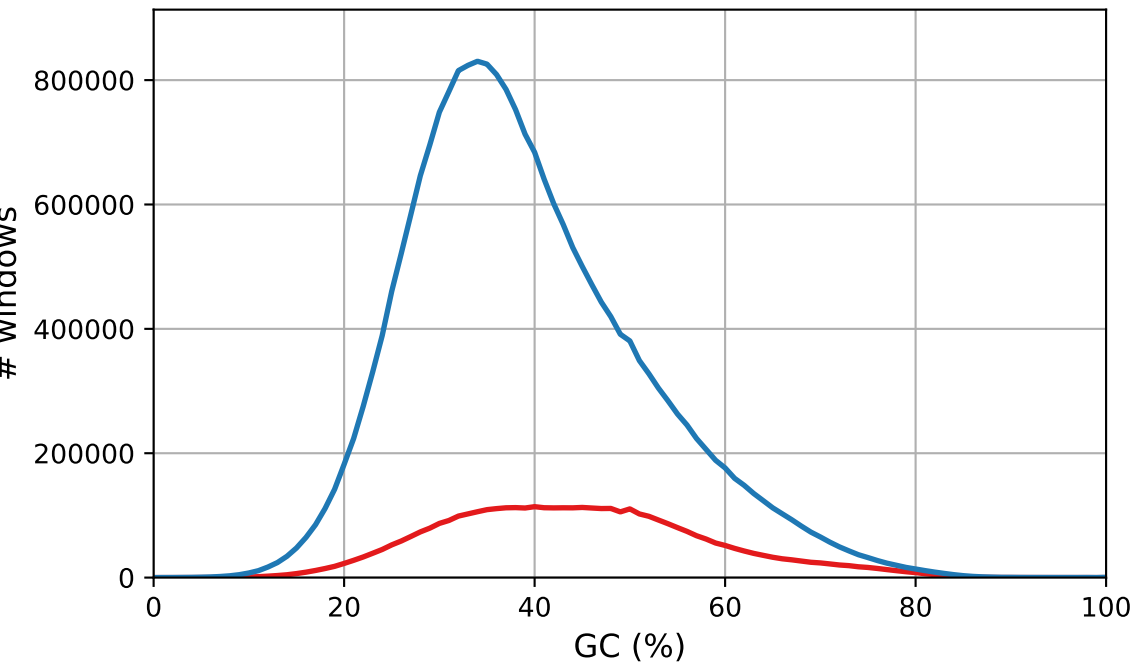
Nx



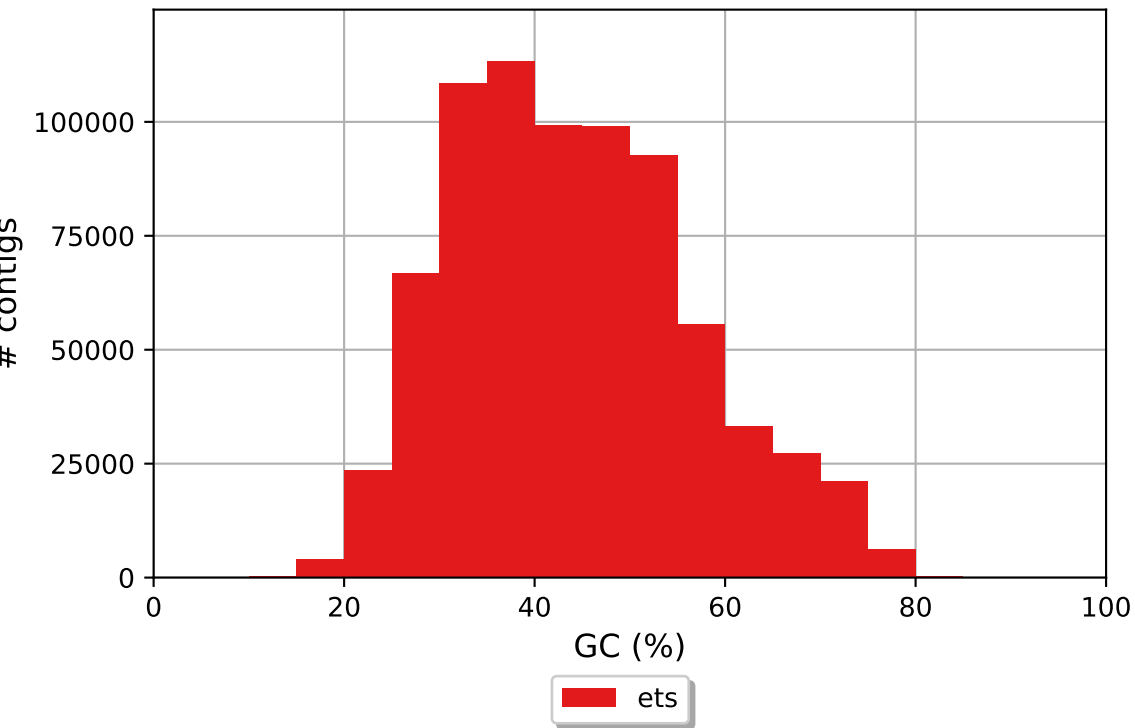
Cumulative length



GC content



ets GC content



sjw GC content

